



COASTAL

LUPINE



2458



3+ FLEX



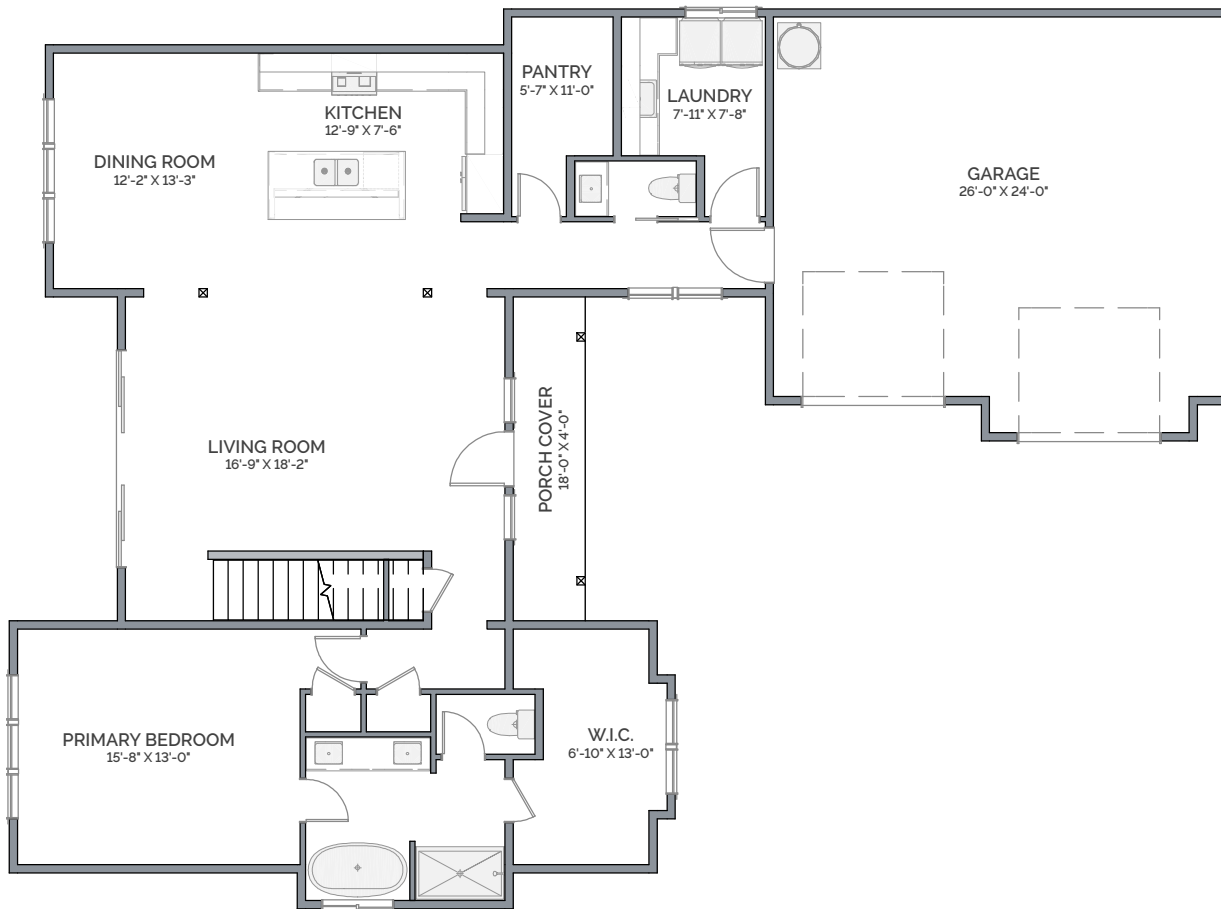
2.5



2



NOTE: Renderings may show optional finishes and features that are not included in the base pricing. Builder reserves right to modify plans, products, and specifications without notice.



COASTAL



This two-story home offers breathtaking coastal views with its expansive windows that extend from floor to ceiling in the two story open living area. The soaring ceilings create a bright and airy space, making the most of natural light and the stunning scenery outside. Designed for those who want to experience coastal living at its finest, this home is perfect for enjoying panoramic ocean vistas.



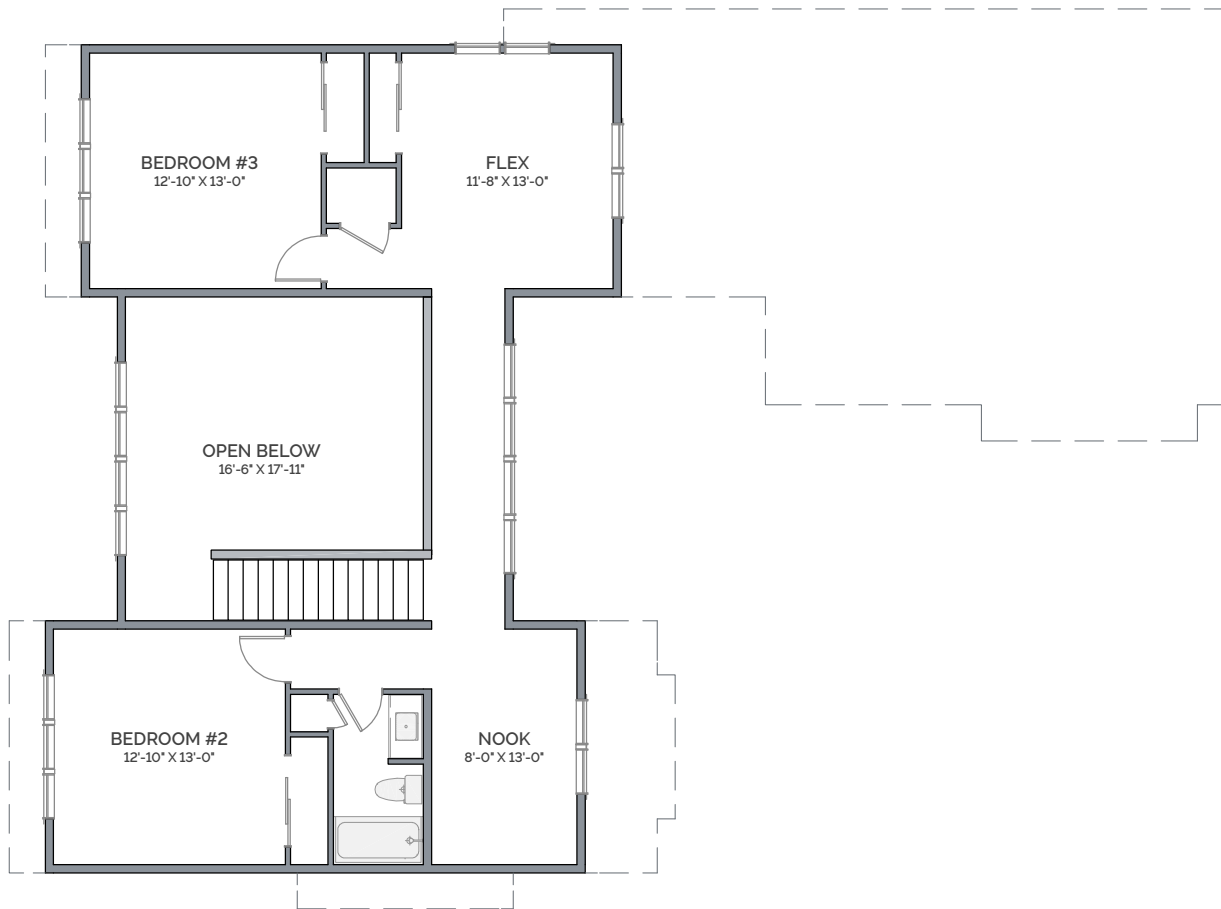
2024 © Copyright by Lexar Homes. All rights reserved. No use of this plan is permitted without the express written permission of Lexar Homes. Renderings may show optional finishes and features that are not included in the base pricing. Builder reserves the right to change plans and specifications without notice. LEXARH*909QT

V1.0

Approx. square feet of living area

LUPINE
68' x 50'

2458



This two-story home offers breathtaking coastal views with its expansive windows that extend from floor to ceiling in the two story open living area. The soaring ceilings create a bright and airy space, making the most of natural light and the stunning scenery outside. Designed for those who want to experience coastal living at its finest, this home is perfect for enjoying panoramic ocean vistas.



2024 © Copyright by Lexar Homes. All rights reserved. No use of this plan is permitted without the express written permission of Lexar Homes. Renderings may show optional finishes and features that are not included in the base pricing. Builder reserves the right to change plans and specifications without notice. LEXARH*909QT

V1.0

Approx. square feet of living area

LUPINE
68' x 50'

2458



FARMHOUSE

LUPINE



2458



3+ FLEX



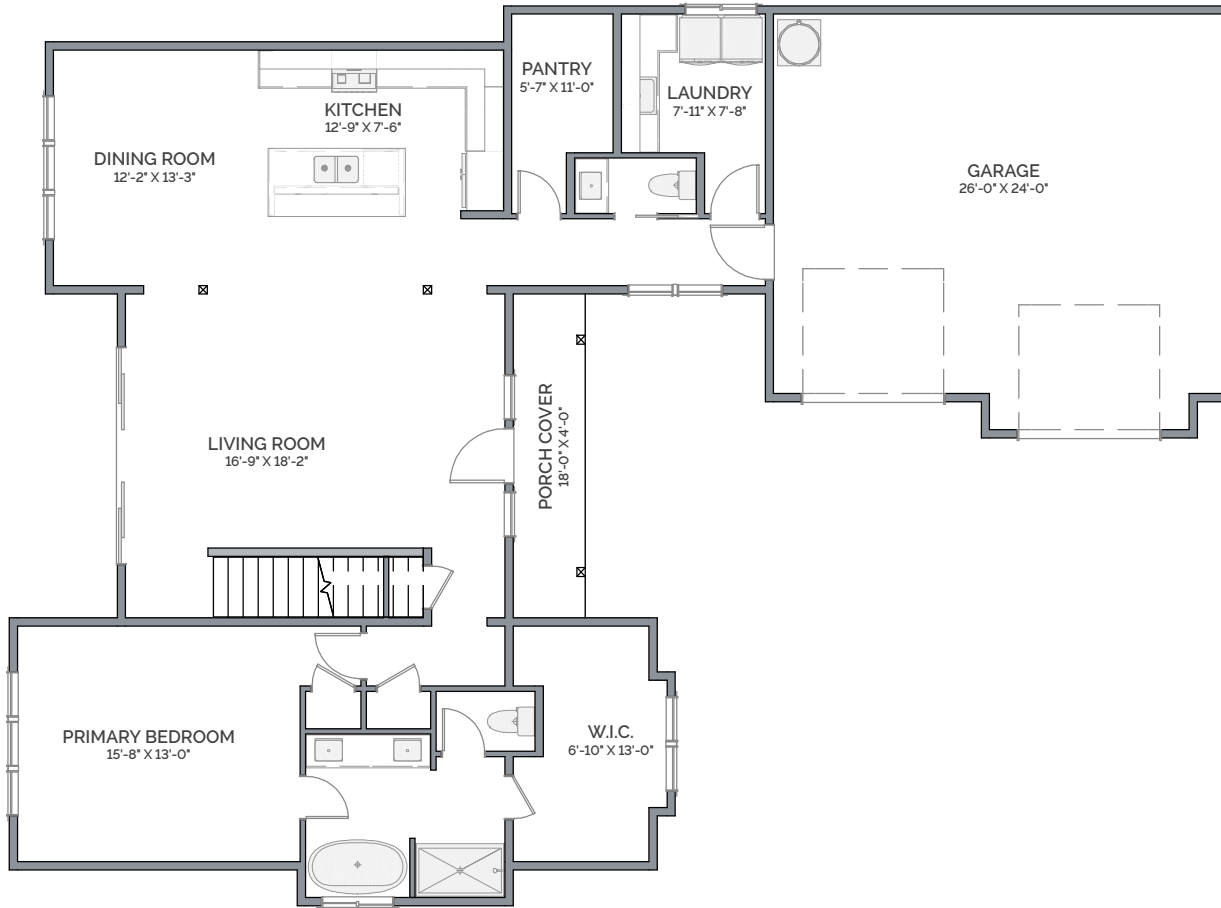
2.5



2



NOTE: Renderings may show optional finishes and features that are not included in the base pricing. Builder reserves right to modify plans, products, and specifications without notice.



FARMHOUSE



This two-story home offers breathtaking coastal views with its expansive windows that extend from floor to ceiling in the two story open living area. The soaring ceilings create a bright and airy space, making the most of natural light and the stunning scenery outside. Designed for those who want to experience coastal living at its finest, this home is perfect for enjoying panoramic ocean vistas.



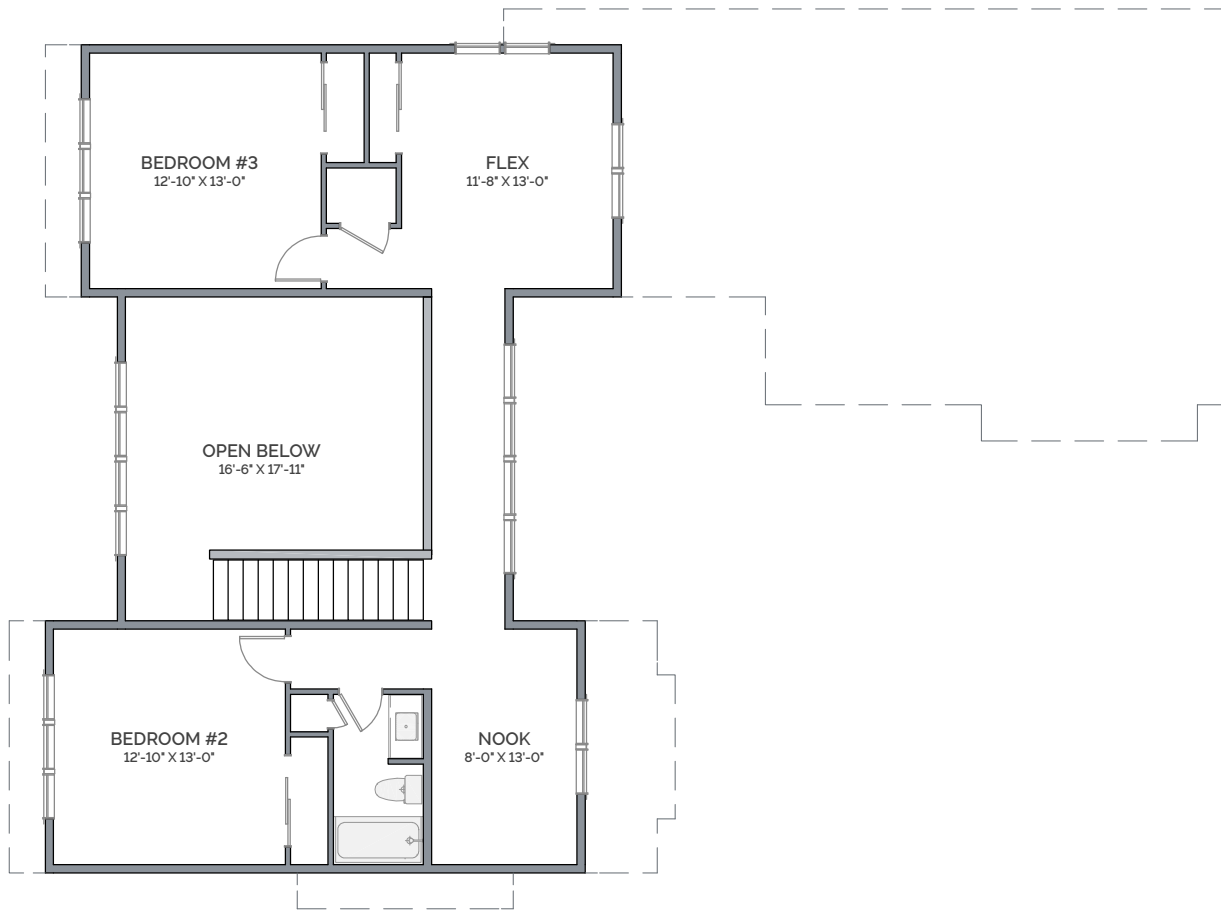
2024 © Copyright by Lexar Homes. All rights reserved. No use of this plan is permitted without the express written permission of Lexar Homes. Renderings may show optional finishes and features that are not included in the base pricing. Builder reserves the right to change plans and specifications without notice. LEXARH*909QT

V1.0

Approx. square feet of living area

LUPINE
68' x 50'

2458



FARMHOUSE



This two-story home offers breathtaking coastal views with its expansive windows that extend from floor to ceiling in the two story open living area. The soaring ceilings create a bright and airy space, making the most of natural light and the stunning scenery outside. Designed for those who want to experience coastal living at its finest, this home is perfect for enjoying panoramic ocean vistas.



2024 © Copyright by Lexar Homes. All rights reserved. No use of this plan is permitted without the express written permission of Lexar Homes. Renderings may show optional finishes and features that are not included in the base pricing. Builder reserves the right to change plans and specifications without notice. LEXARH*909QT

V1.0

Approx. square feet of living area

LUPINE
68' x 50'

2458



MODERN

LUPINE



2458



3+ FLEX



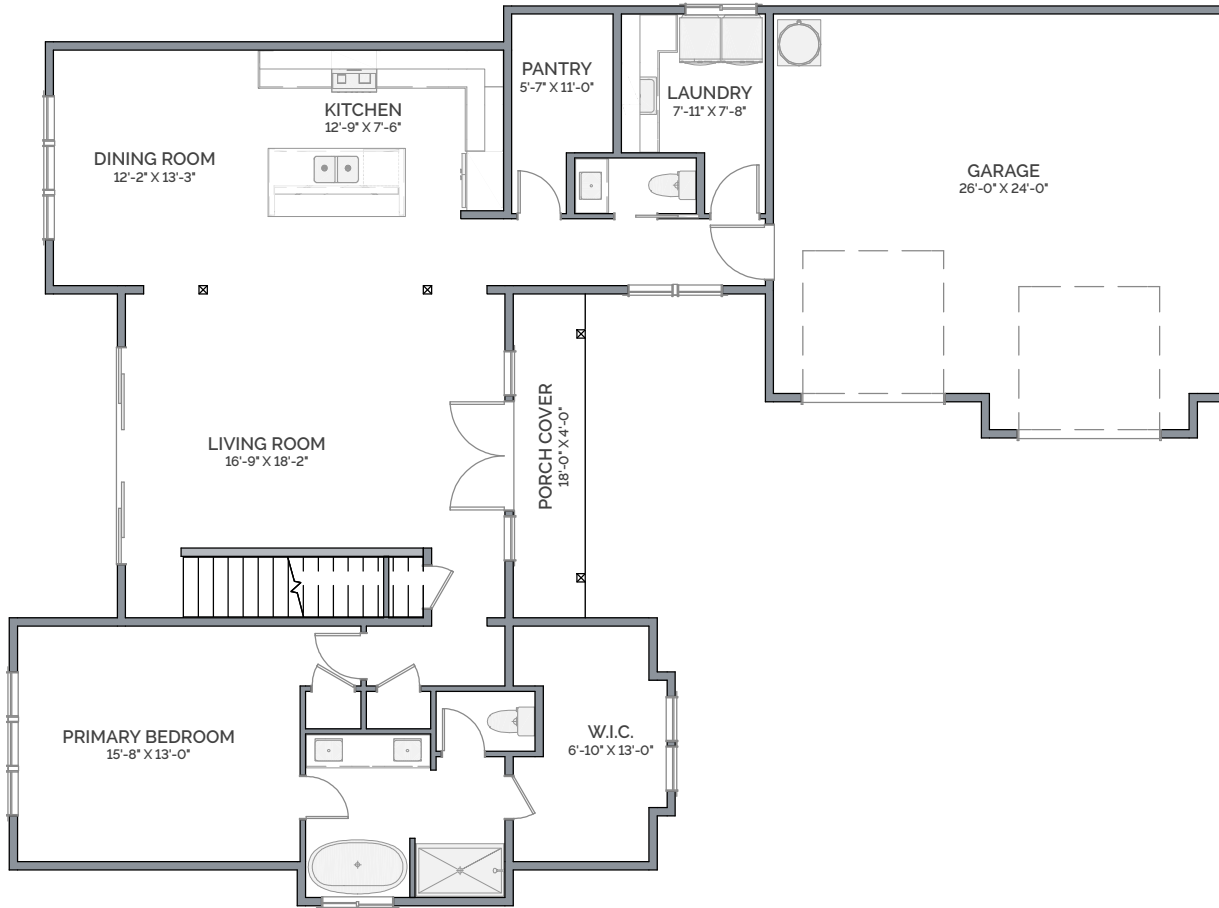
2.5



2



NOTE: Renderings may show optional finishes and features that are not included in the base pricing. Builder reserves right to modify plans, products, and specifications without notice.



This two-story home offers breathtaking coastal views with its expansive windows that extend from floor to ceiling in the two story open living area. The soaring ceilings create a bright and airy space, making the most of natural light and the stunning scenery outside. Designed for those who want to experience coastal living at its finest, this home is perfect for enjoying panoramic ocean vistas.



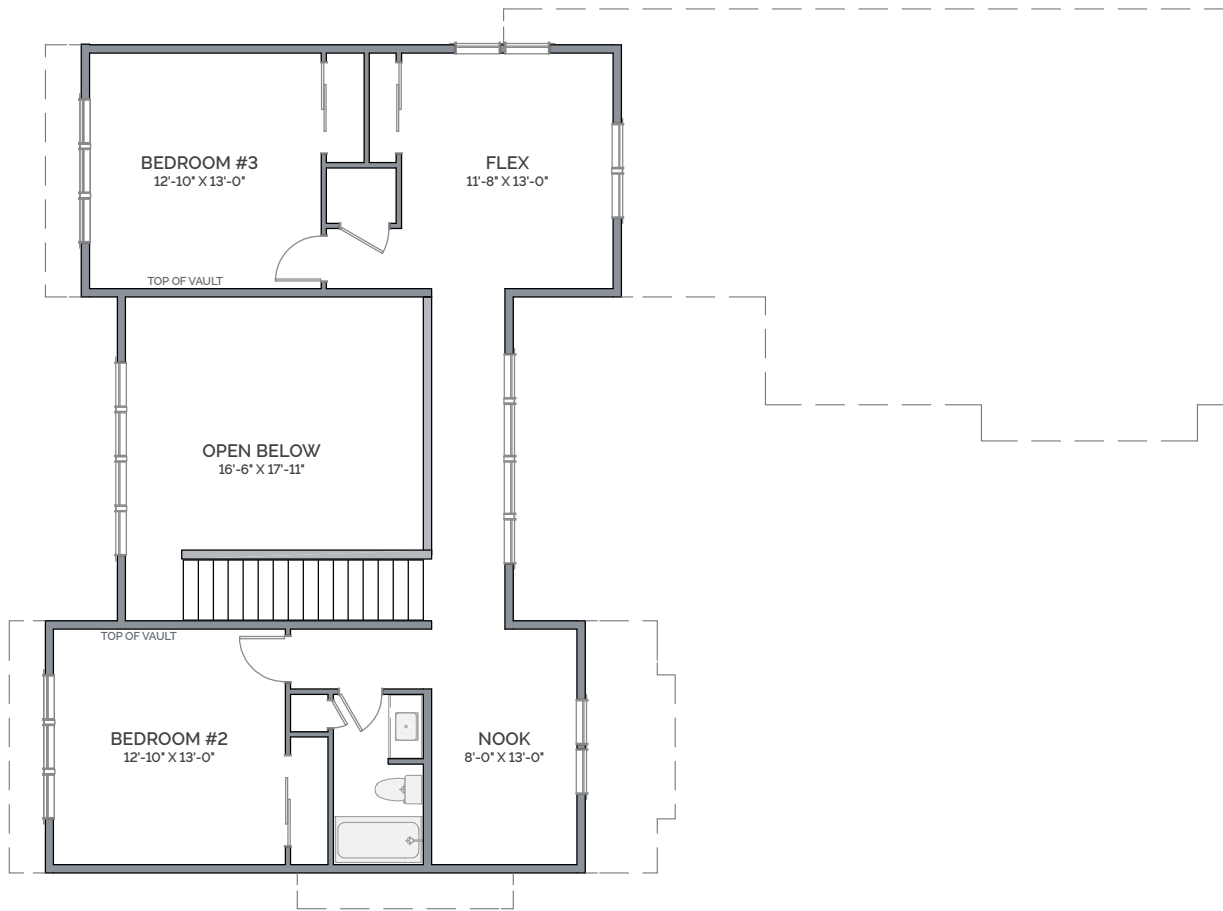
2024 © Copyright by Lexar Homes. All rights reserved. No use of this plan is permitted without the express written permission of Lexar Homes. Renderings may show optional finishes and features that are not included in the base pricing. Builder reserves the right to change plans and specifications without notice. LEXARH*909QT

V1.0

Approx. square feet of living area

LUPINE
68' x 50'

2458



MODERN



This two-story home offers breathtaking coastal views with its expansive windows that extend from floor to ceiling in the two story open living area. The soaring ceilings create a bright and airy space, making the most of natural light and the stunning scenery outside. Designed for those who want to experience coastal living at its finest, this home is perfect for enjoying panoramic ocean vistas.



2024 © Copyright by Lexar Homes. All rights reserved. No use of this plan is permitted without the express written permission of Lexar Homes. Renderings may show optional finishes and features that are not included in the base pricing. Builder reserves the right to change plans and specifications without notice. LEXARH*909QT

V1.0

Approx. square feet of living area

LUPINE
68' x 50'

2458